

PSA Recombinant antibody

Cat:B32032R

Company: Haokebio

Uniprot ID:P07288

Applications: IHC:1:100-1:200

Organism:Rabbit

IHC-Polymer:1:400-1:800

Species reactivity:Human

TSA:1:500-1:1000

Background:

Prostate-Specific Antigen (PSA) is a single-chain glycoprotein composed of 237 amino acids, containing approximately 8% carbohydrates. PSA is a type of serine protease produced almost exclusively by prostatic epithelial cells. In immunohistochemistry, PSA is specifically expressed on the apical surface of prostatic secretory cells and in approximately 99% of prostate cancer cases. There is a correlation between PSA staining intensity and malignancy grade: the higher the tumor grade, the weaker the PSA expression, and about 1% of poorly differentiated carcinomas show PSA negativity. PSA can be used in combination with NKX3.1 and Prostein. The sensitivity of NKX3.1 and Prostein is comparable to that of PSA, while their specificity is slightly superior to that of PSA.

Protein full name:

kallikrein-related peptidase 3

Synonyms:

KLK3, 4A1E2, APS, EC:3.4.21.77, Gamma-semi-noprotein

Immunogen:

Peptide

Isotype:

IgG

Subcellular location:

Secreted

Purity:

Affinity purification

Form:

Liquid

Storage Buffer:

PBS with 0.02% sodium azide, 100 µg/ml BSA and 50% glycerol.

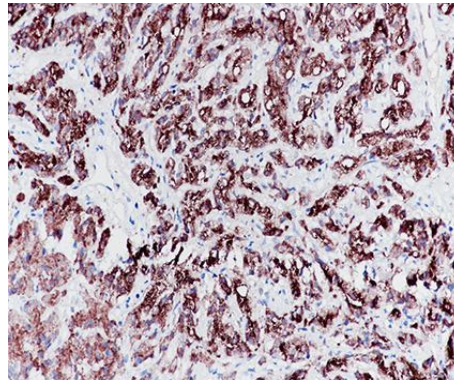
Storage:

Store at -20 °C for one year.

Experimental procedure:

Antigen retrieval: Citrate buffer (pH 9.0), Medium high heat for 8 minutes, stop for 7 minutes, medium high heat for 8 minutes. Incubate antibody, 4°C overnight. Secondary antibody: Poly-HRP Goat Anti-Rabbit & Mouse Universal Secondary Antibody, RT, 1h.

Images:



Sample: Human prostate tissue, 4% PFA 12-24h

Source of Reagents:

发表[中文论文]请标注:PSA(B32032R)由杭州浩克生物技术有限公司提供;

发表[英文论文]请标注:PSA(B32032R) were kindly provided by Hangzhou Haoke Biotechnology Co., Ltd.